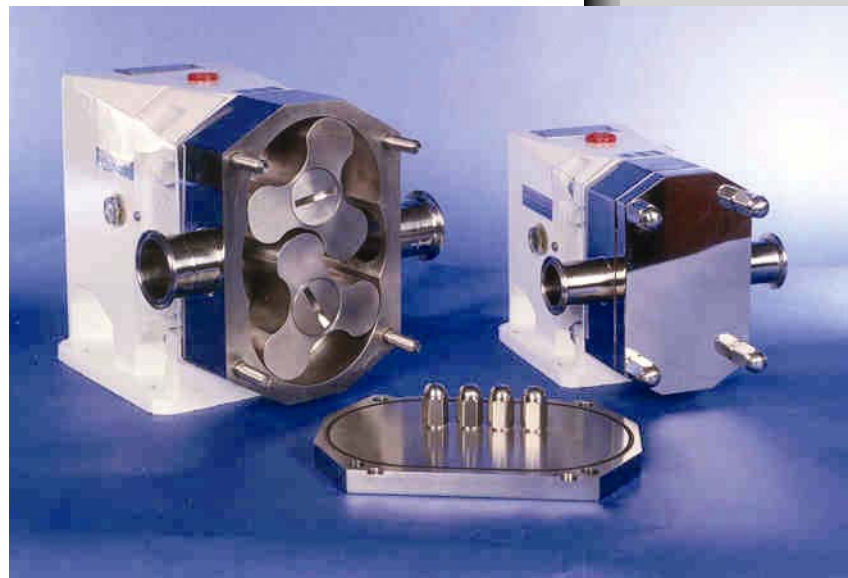


Jensen

A Swagelok® Company



JenFlo®
Positive
Displacement
Pumps

Jensen's new Jenflo "Clean in Place Style" (C.I.P.) Positive Displacement Pump (JFPD); has been designed for the food, dairy, beverage, pharmaceutical and related industries.

This 3A Sanitary Rotary Lobe Pump is designed for efficient transfer of your product without "rotor contact", resulting in long life of your pump and pump parts.

Our heavy duty gear box and short shafts offers resistance to deflection and allows us to run at pressures up to 319 PSI without front support bearings.

TYPICAL APPLICATIONS

- Dairy
- Puddings
- Concentrates
- Beverages
- Liquid Sugar
- Vegetable & Other Oils
- Molasses
- Vegetables
- Tomato Products
- Sauces
- Fruits
- Meat
- Pet Food
- Carmel
- Baby Food
- Pharmaceutical
- Cosmetics
- Lotions & Creams

ADVANTAGES

- 14 models and low cost.
- Easy maintenance and seal removal without removing pump from pipelines.
- No shimmiess required.
- Compact construction.
- No contact between rotors and therefore long life.
- Possibility of dry operation, with flushing.
- Low noise level.
- Reduced maintenance cost.
- "Long life" seal options.
- Reversible.
- Heating jacket on cover or back plate (optional)
- By-pass valve with adjustable spring (optional).
- Reversible long life stationary seal seat.
- 1/2" to 6" ports.

MATERIALS

- All wetted parts are made of 316 Stainless steel.
- Gearbox made of cast iron (painted).
- 329 SS shafts allow high working pressures.

OTHER ACCESSORIES INCLUDE:

- Baseplates
- Gear Motors
- V.F. Drives
- Couplings and Guards

SHAFT SEALING

Several seal options including:

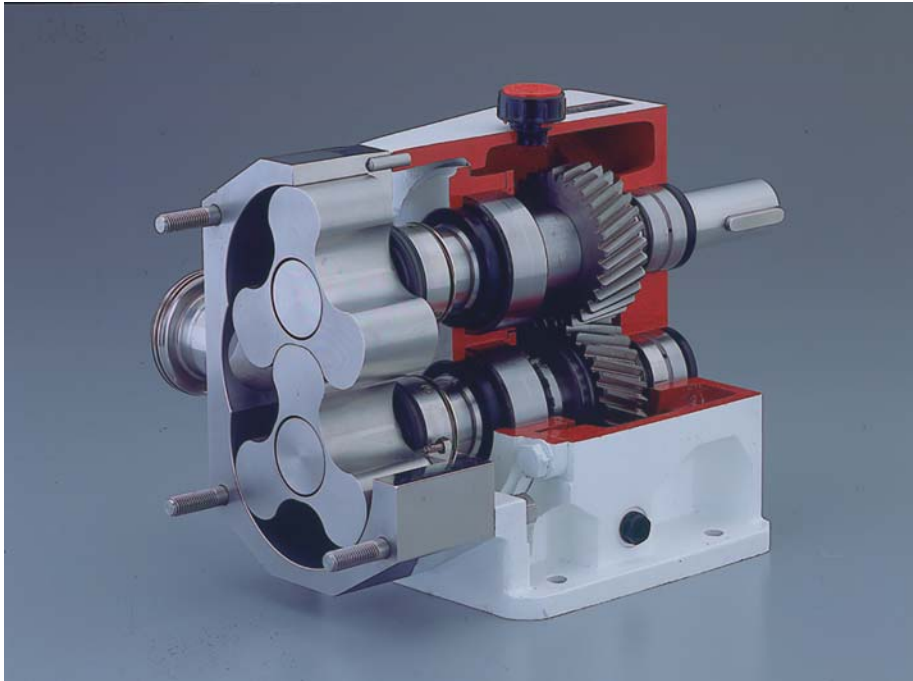
- Carbon vs. Silicon Carbide
- Silicon Carbon vs. Silicon Carbide
- Tungsten Carbide vs. Silicon Carbide
- Single lip seal
- O-Ring seal
- Double lip seal
- Packing (Industrial)
- Double mechanical seal in high pressure pumps only (available with water flush)

ROTORS

In order to get the maximum efficiency, minimum internal slip, and longer service life, the three Lobe rotor geometry has been determined based upon wide studies using three-dimensional CAD technology.

Rotors are of sanitary design and are provided with O-rings on the rotor screw and shaft sleeve to prevent the process liquid from getting to the shaft spines.

Note: Wing-tip style rotors are also available.



Refer to the Table below and the corresponding notes for value limits (viscosity, temperature, and pressure...).

			HEAVY DUTY
	Normal Capacity	High Capacity	High Pressure
Theoretical Flow rate US gal/min (per 100 rpm)	57 gpm	84 gpm	13 gpm
Maximum flow rate	344 gpm	509 gpm	125 gpm
Maximum pressure	174 psi	102 psi	319 psi
Maximum connections	4 inch	6 inch	2 inch
Maximum temperature	230° F	230° F	230° F
Maximum viscosity (recommended)	100,000 (cP)	100,000 (cP)	100,000 (cP)
Maximum speed	1450 rpm	950 rpm	1450 rpm

Notes: The maximum viscosity allowed will depend on the nature of the liquid and the sliding of the seal faces. Consult JENSEN should the viscosity be still greater.

WARNING THE FOLLOWING LIMITS OUGHT TO BE CONSIDERED FOR THE:

Heating Jacket: Temperature max. 356° F
Pressure max. 58 psi

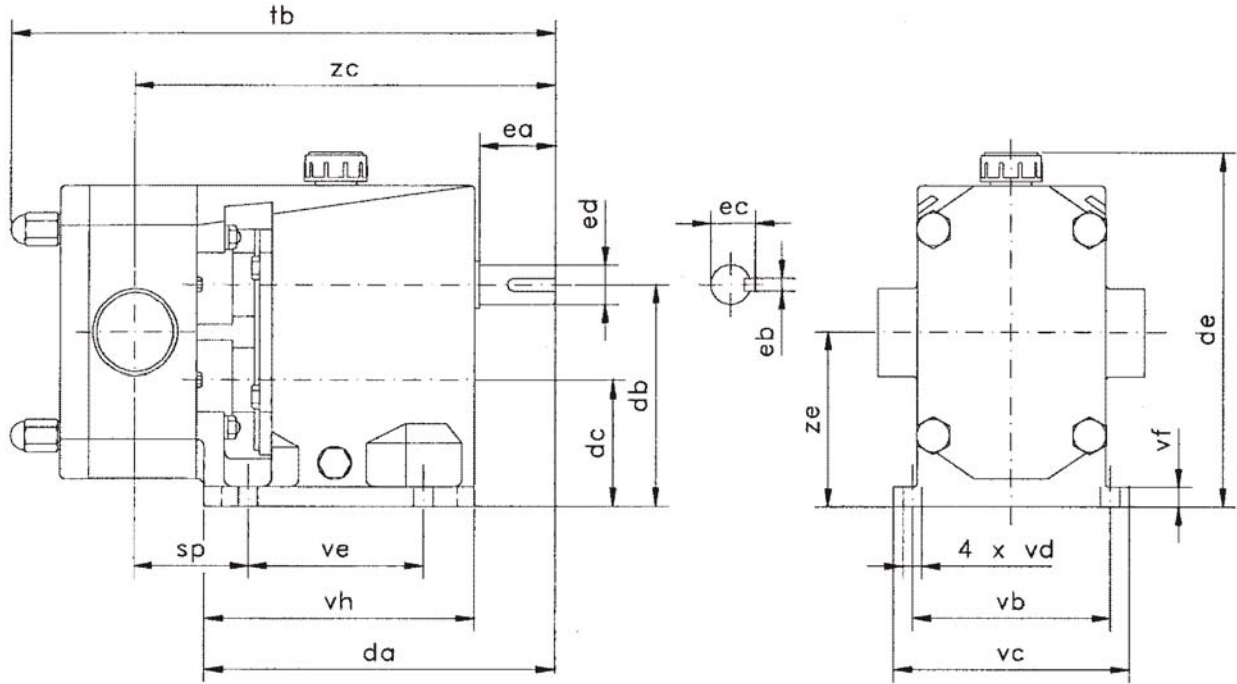
Flushing: Flow 0.7 to 1.3 gpm
Pressure max. 7.3 psi

Elastomers: EPDM: Temperature max. 250° F
FLUOROCARBON FKM: Temperature max. 356° F
BUNA N: Temperature max. 212° F

PTFE:

Temperature max. 356° F

“STANDARD” HORIZONTAL PORT PUMP DIMENSIONAL DATA

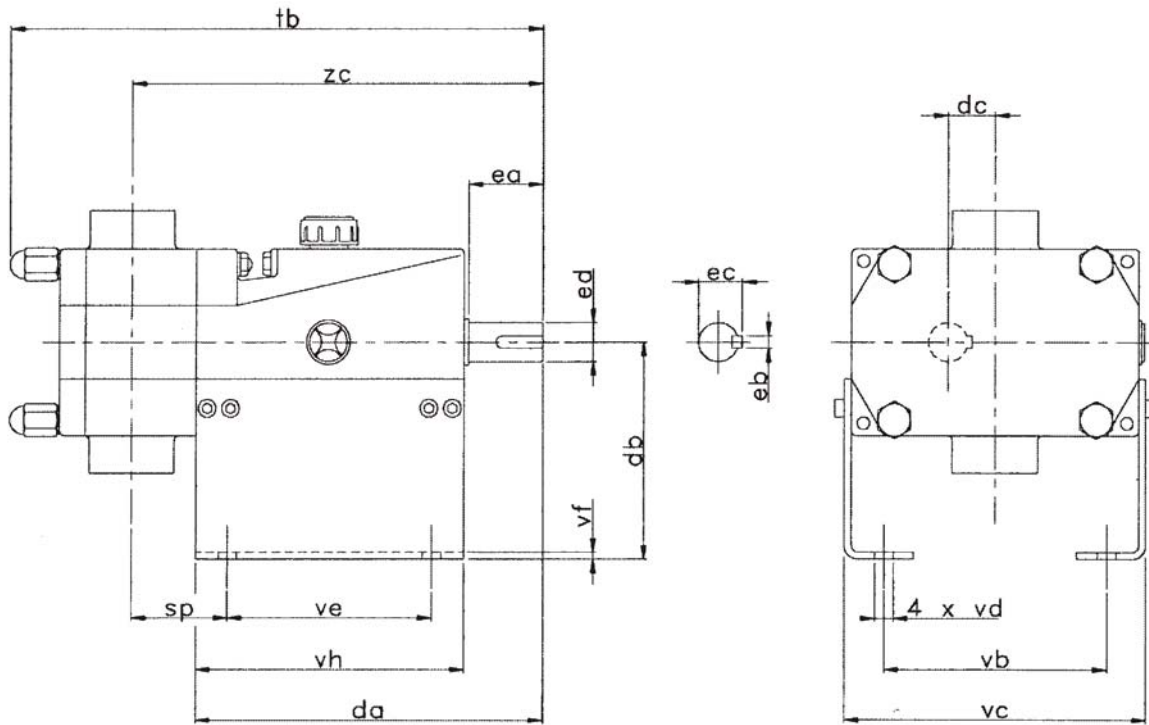


* Dimensions in Millimeters

MODEL	da	db	dc	de	ea	eb	ec	ed	sp	tb	vb	vc	vd	ve	vf	vh	zc	ze
JFPD-004									2.40	9.97							8.39	
JFPD-008	6.30	3.15	1.58	5.44	30	5	16.2	14	2.52	10.28	4.02	4.65	0.35	1.97	0.35	2.56	8.51	2.36
JFPD-007									2.68	10.60							8.67	
JFPD-024	7.37	4.41	2.44	7.33	40	6	21.6	19	2.52	11.03	4.53	5.32	0.35	3.35	0.39	5.71	8.59	3.43
JFPD-035									2.76	11.50							8.83	
JFPD-029									3.15	13.28							10.5	
JFPD-059	8.71	5.52	3.07	8.83	50	8	27	24	2.92	13.28	4.93	5.91	0.43	4.14	0.47	6.66	10.3	4.29
JFPD-075									3.15	13.75							10.5	
JFPD-074									3.82	16.94							13.9	
JFPD-128	11.70	7.49	3.82	11.4	80	10	41.4	38.0	3.59	16.94	6.70	8.27	0.51	5.12	0.55	8.43	13.7	5.65
JFPD-180									3.98	17.81							14.2	
JFPD-125									4.61	24.70							20.9	
JFPD-340	17.06	9.46	4.73	14.4	110	16	58.9	55	3.62	24.70	10.2	11.4	0.71	11	0.59	12.6	19.9	7.09
JFPD-500									4.61	26.67							20.9	

Dimensions In Inches; Unless Noted Otherwise*

VERTICAL PORT PUMP DIMENSIONAL DATA

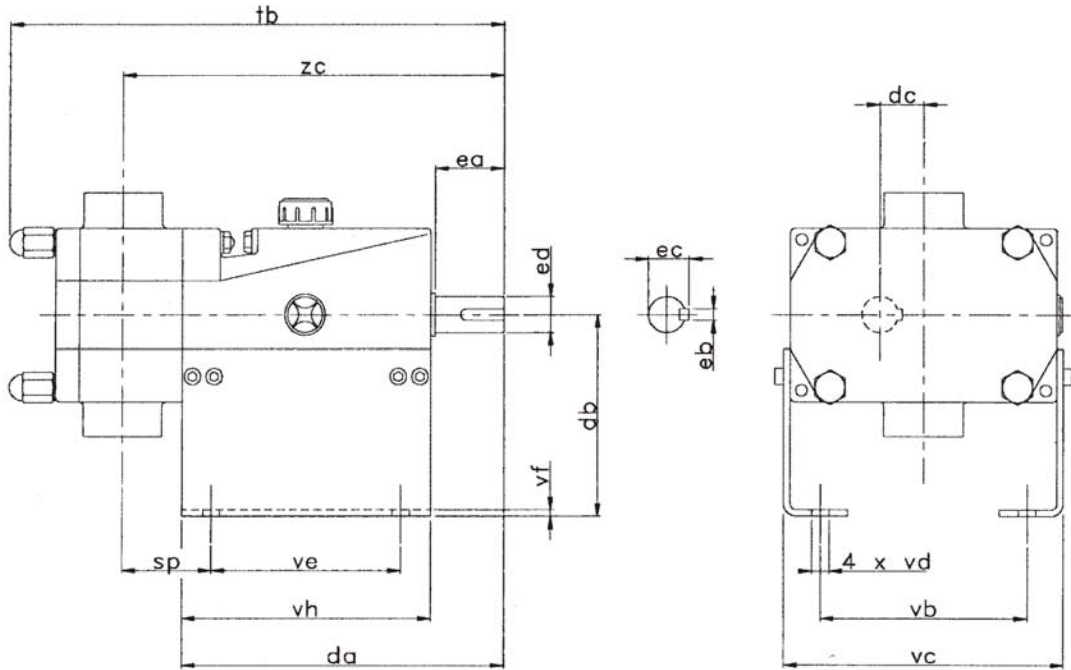


* Dimensions in
Millimeters

MODEL	da	db	dc	de	ea	eb	ec	ed	sp	tb	vb	vc	vd	ve	vf	vh	zc
JFPD-004									2.40	9.97							8.39
JFPD-008	6.30	3.15	0.79	4.53	30	5.00	16.2	14	2.52	10.28	4.02	4.65	0.355	1.97	0.35	2.56	8.51
JFPD-007									2.68	10.60							8.67
JFPD-024	6.50	4.41	0.99	6.30	40	6	21.6	19	2.52	11.03	4.53	5.32	0.355	3.35	0.39	4.14	8.59
JFPD-035									2.76	11.50							8.83
JFPD-029									3.15	13.28							10.52
JFPD-059	7.88	5.52	1.22	7.49	50	8	27	24	2.92	13.28	4.93	5.91	0.433	4.14	0.47	5.12	10.28
JFPD-075									3.15	13.75							10.52
JFPD-074									3.82	16.94							13.95
JFPD-128	11.03	7.49	1.83	9.85	80	10	41.4	38	3.59	16.94	6.70	8.27	0.512	5.12	0.55	6.70	13.71
JFPD-180									3.98	17.81							14.18

Dimensions In Inches; Unless Noted Otherwise*

VERTICAL PORT PUMP DIMENSIONAL DATA



* Dimensions in
Millimeters

MODEL	da	db	dc	ea	eb	ec	ed	sp	tb	vb	vc	vd	ve	vf	vh	zc
JFPD-125	17.06	8.87	2.36	110	16.0	58.9	55.0	4.61	24.70	10.24	13.59	0.71	11.03	0.24	12.61	20.88
JFPD-340								3.62	24.70							19.90
JFPD-500								4.61	26.67							20.88

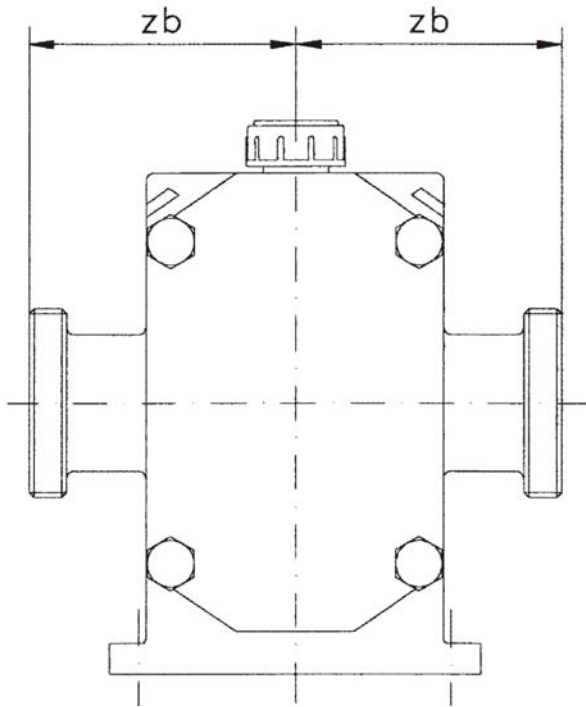
Dimensions In Inches; Unless Noted Otherwise*

TECHNICAL DATA

MODEL #	S(max) (rpm)	B1 (in)	D1 (in)	V(s-100) (gallons)	G(th) (gpm)	P(max) (psi)	Vu (f/s)	V1 (f/s)
JFPD-004	1450	0.39	1.88	0.27	3.96	319	11.91	10.43
JFPD-007	950	1.14	1.88	0.79	7.49	102	7.81	3.15
JFPD-008	1450	0.83	1.88	0.55	7.93	174	11.91	5.77
JFPD-024	950	1.18	2.72	2.63	24.97	174	11.28	9.74
JFPD-035	950	1.65	2.72	3.68	34.96	102	11.28	6.40
JFPD-029	1450	1.18	2.93	1.96	28.62	319	19.12	11.48
JFPD-059	950	1.65	3.45	6.18	58.70	174	14.30	10.73
JFPD-075	950	2.13	3.45	7.95	75.47	102	14.30	7.97
JFPD-074	1200	1.65	4.39	6.18	74.20	319	22.96	13.55
JFPD-128	720	2.13	5.18	17.89	128.80	174	16.27	13.58
JFPD-180	720	2.99	5.18	25.17	181.24	102	16.27	7.28
JFPD-125	950	2.13	5.67	13.25	125.85	319	23.45	13.25
JFPD-340	600	4.10	6.69	57.39	344.34	174	17.48	9.09
JFPD-500	600	6.07	6.69	84.99	509.91	102	17.48	5.97

S(max)= maximum working speed
 B1= lobe width
 D1= lobe diameter
 V(s-100)= capacity per 100 RPM
 G(th)= maximum flow at maximum speed
 P(max)= maximum test pressure
 VU= maximum circumferential velocity
 V1= maximum inlet speed

“STANDARD” HORIZONTAL PORT PUMP DIMENSIONAL DATA



MODEL	Connection Size	ZB standard "Clamp"
JFPD-004	1/2"	2.76
JFPD-008	3/4"	3.03
JFPD-007	1"	2.84
JFPD-024	1"	3.70
JFPD-035	1 1/2"	3.90
JFPD-029	1"	4.20
JFPD-059	1 1/2"	4.20
JFPD-075	2"	4.20
JFPD-074	1 1/2"	5.26
JFPD-128	2"	5.28
JFPD-180	3"	5.28
JFPD-125	2"	6.36
JFPD-340	4"	6.36
JFPD-500	6"	6.62

MODEL #	Internal diameter connection (inch)	Max. theoretical particle size (inch)	Recommended max. particle size (inch)
JFPD-004	0.394	0.296	0.099
JFPD-007	0.867	0.296	0.099
JFPD-008	0.630	0.296	0.099
JFPD-024	0.867	0.812	0.276
JFPD-035	1.379	0.812	0.276
JFPD-029	0.867	0.481	0.158
JFPD-059	1.379	1.009	0.355
JFPD-075	1.891	1.009	0.355
JFPD-074	1.379	0.725	0.236
JFPD-128	1.891	1.517	0.512
JFPD-180	2.837	1.517	0.512
JFPD-125	1.891	0.859	0.276
JFPD-340	3.822	1.797	0.591
JFPD-500	5.910	1.797	0.591

Pump Ordering Information

Example: JFPD-128-20

JF = Jenflo Pump PD = Positive Displacement

128 = Maximum Flow Rate (GPM)

20 = 2" Connection

Note:

When pumping soft particles the approximate expected damage is as follows:

<10% damage when using standard trilobe rotors.

<2% damage when using special wing-tip rotors.

Safe Product Selection

When selecting a product, the total system design must be considered to ensure safe, trouble-free performance. Function, material compatibility, adequate ratings, proper installation, operation, and maintenance are the responsibilities of the system designer and user.

Swagelok – TM Swagelok Company
Jenflo – TM Jensen
© 2002 Swagelok Company
Printed in U.S.A., GLL
August 2002, R0
PDPUMPCAT